

Brunswick Plantation & Golf Resort®

The Dogwood

approx. 2712 sq.ft.



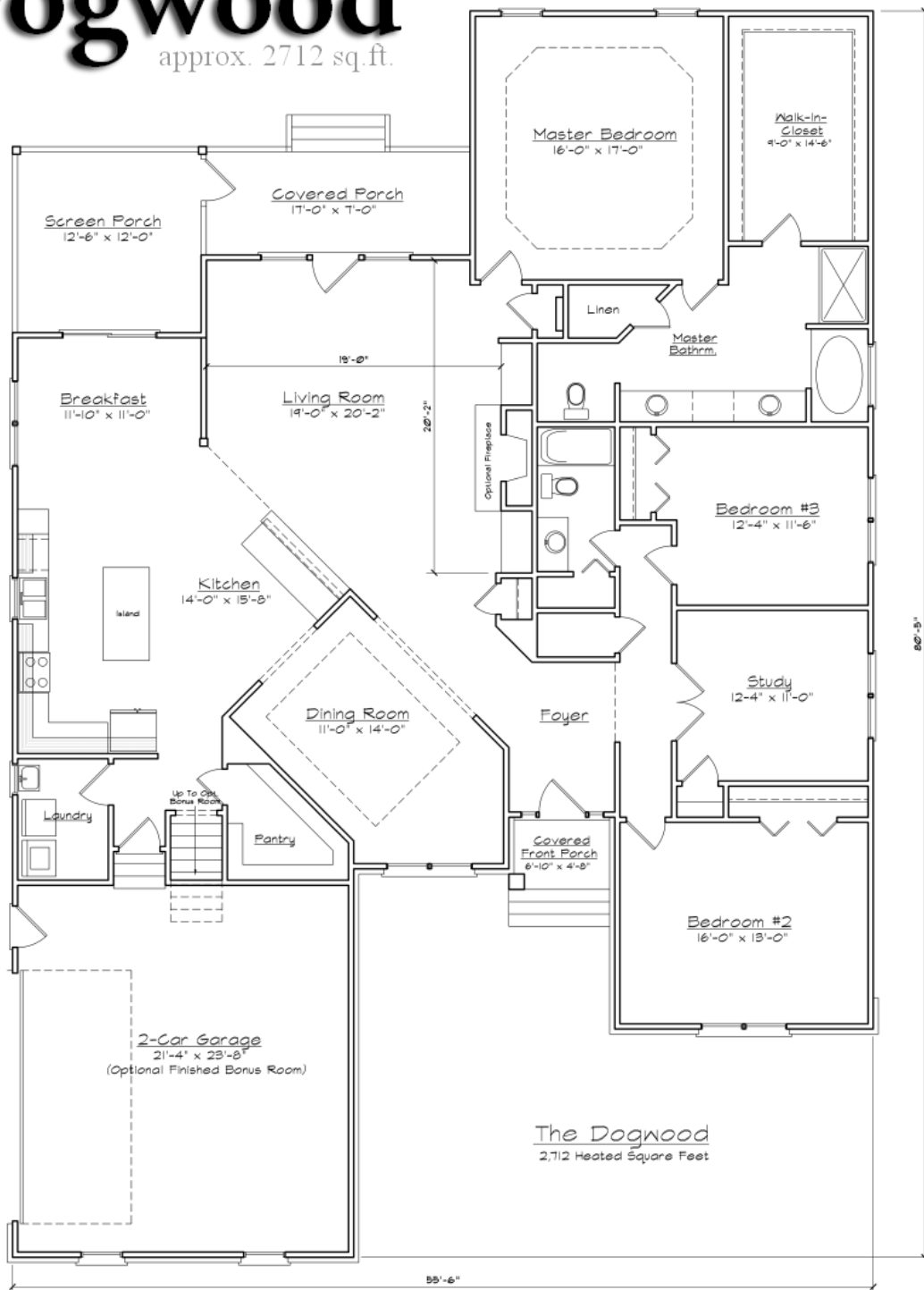
Brunswick Plantation & Golf Resort®



For more information, call us at (800)835-4533 or visit www.brunswickplantationhomes.com

The Dogwood

approx. 2712 sq.ft.



***Notes:**

ALL Skylights, Fireplaces, Bay Windows, & Front Doors are
Optional Upgrades

Brunswick Plantation & Golf Resort®



For more information, call us at (800)835-4533 or visit www.brunswickplantationhomes.com