

Brunswick Plantation & Golf Resort®

The **Oglethorpe**
approx. 2057 sq.ft.



Brunswick Plantation & Golf Resort®

For more information, call us at (800)835-4533 or visit www.brunswickplantationhomes.com

The Oglethorpe

approx. 2057 sq.ft.

Alternate Elevation

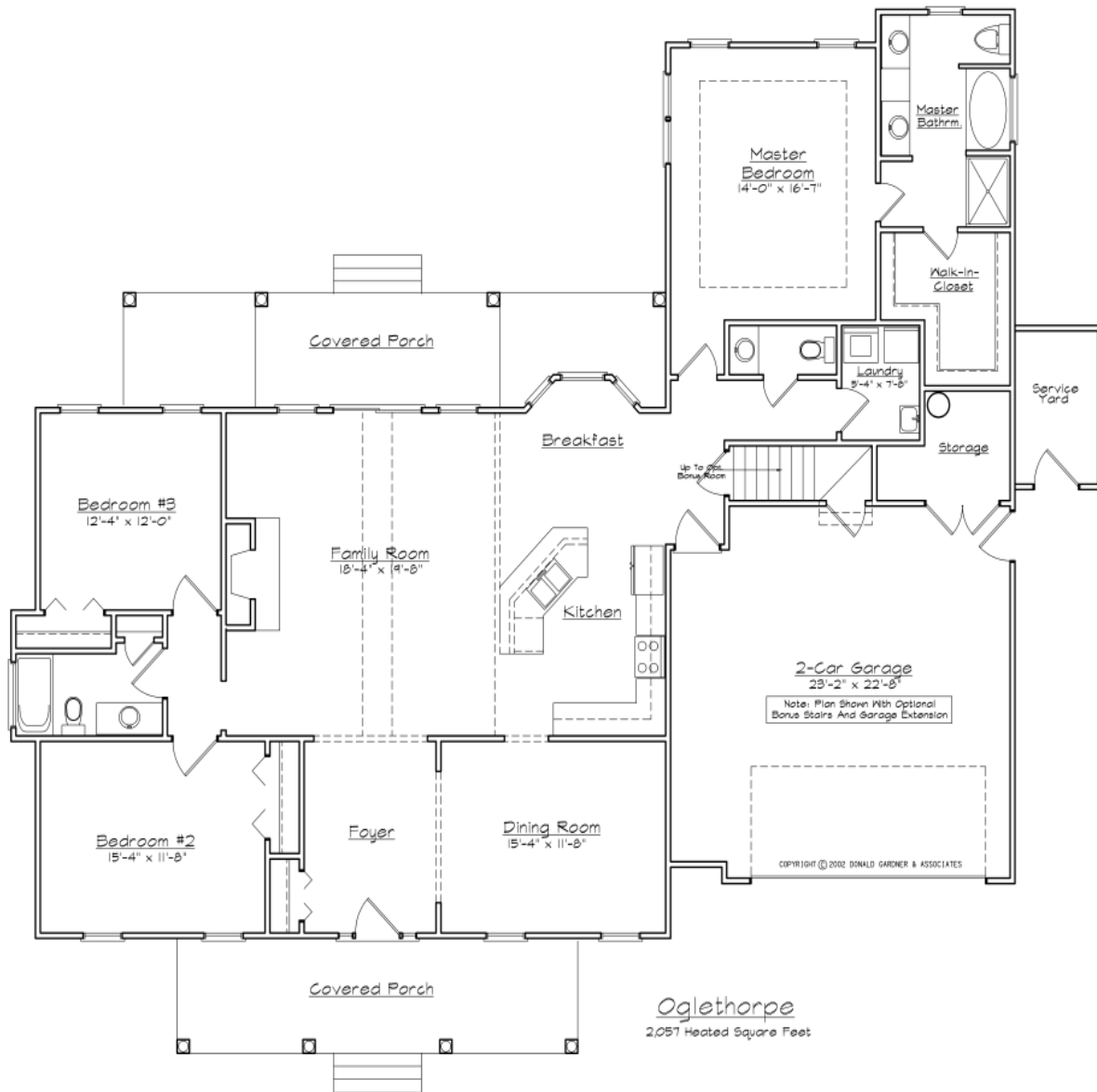


Brunswick Plantation & Golf Resort®

For more information, call us at (800)835-4533 or visit www.brunswickplantationhomes.com

The Oglethorpe

approx. 2057 sq.ft.



***Notes:**

**ALL Skylights, Fireplaces, Bay Windows, & Front Doors are
Optional Upgrades**



Brunswick Plantation & Golf Resort®

For more information, call us at (800)835-4533 or visit www.brunswickplantationhomes.com