

Brunswick Plantation & Golf Resort®

The **Rutledge III**
approx. 2159 sq.ft.



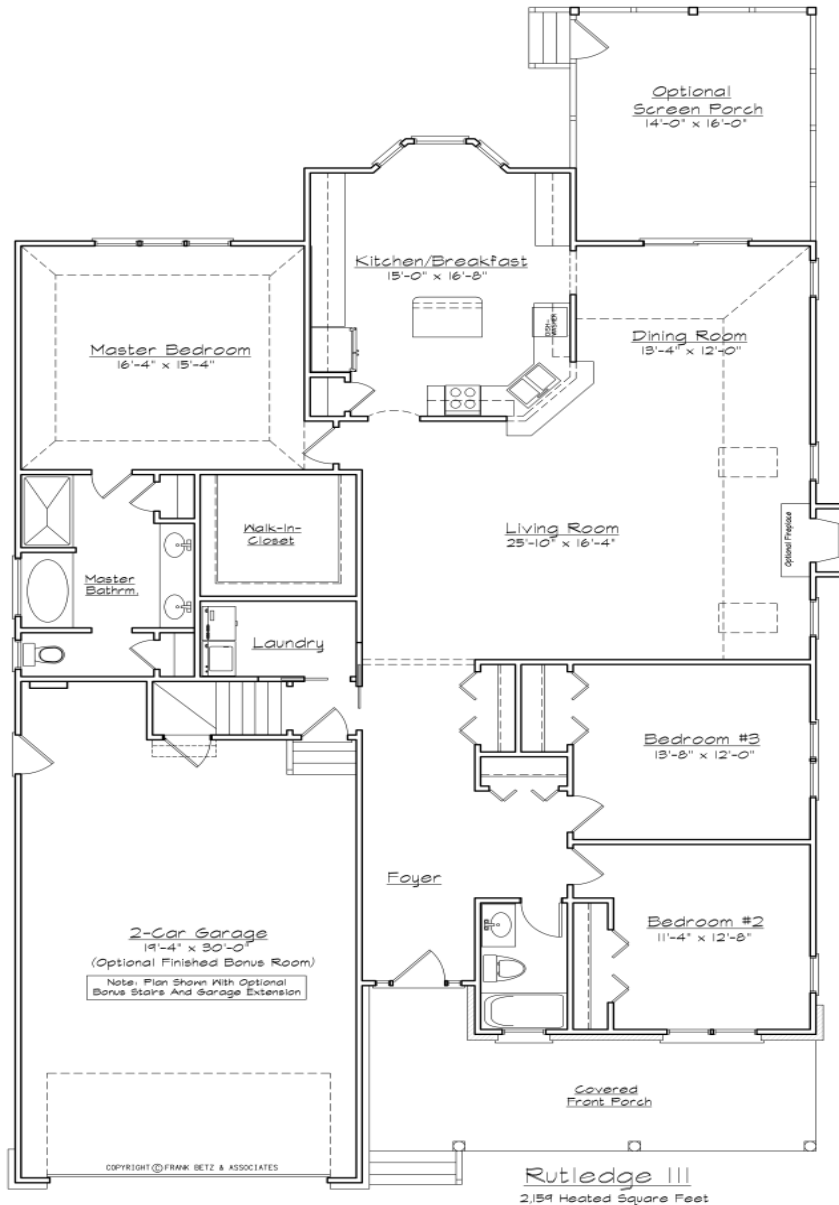
Brunswick Plantation & Golf Resort®



For more information, call us at (800)835-4533 or visit www.brunswickplantationhomes.com

The Rutledge III

approx. 2159 sq.ft.



***Notes:**

**ALL Skylights, Fireplaces, Bay Windows, & Front Doors are
Optional Upgrades**



Brunswick Plantation & Golf Resort®

For more information, call us at (800)835-4533 or visit www.brunswickplantationhomes.com